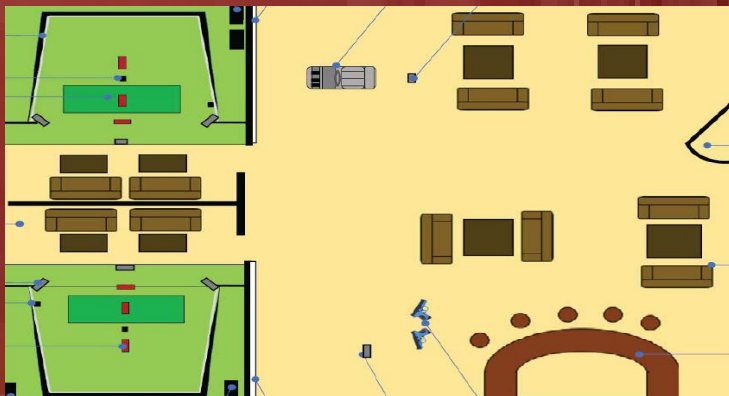
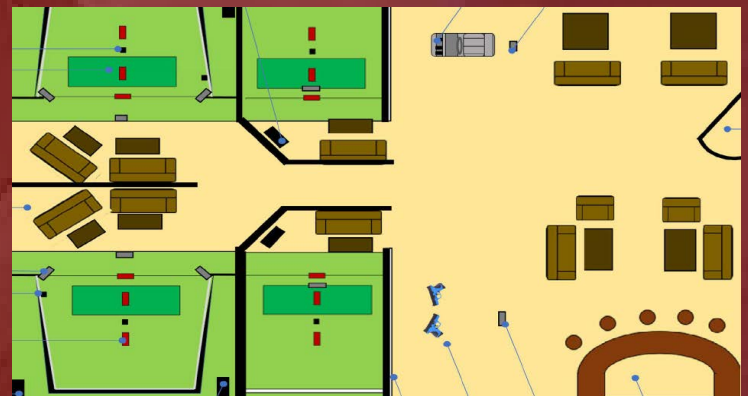


FAMILY ENTERTAINMENT CENTRES, ACADEMIES AND CAFES VERY PROFITABLE BUSINESSES, WITH SPORTS SIMULATORS

Entertainment is going through a major expansion with people now wishing to change their relaxation habits, so spare time is focused on enjoyment. More commercial space becoming available as most people are now buying online instead of going to shops, or watching movies online instead of visiting the cinema. It is now the ideal time for new leisure businesses to open within available commercial space at significantly reduced rental costs. There is a need to satisfy the growing entertainment market and variety is key to retaining customers. When fitness and entertainment are combined with technology that is regularly updated, an entertainment business is always fresh and exciting. Sports Simulators are a popular solution providing state of the art technology, that can be custom-fit within the most available space. Offering Football, Tennis, Gridiron, Golf, Rugby, Cricket, Basketball, Baseball, Ice Hockey, Shooting, Motor Racing, Field Hockey, Contest Golf, Handball, Volleyball, Foot Golf and more means that all sports players and fans are catered for. There are four business plans available to study, which explain how it's very easy to set up entertainment centre(s) with minimal investment, which will attract investors from within the leisure industry. Please Review www.sportssimulator.com/business-plans



YEAR ONE	FEE £	UNIT	DAILY	WEEKLY	ANNUAL
PEAK USAGE	40.00	HOUR	9	63	131,040
OFF PEAK	25.00	HOUR	7	49	63,700
SPONSORSHIP	20.00	DAY	3	21	21,840
TOTAL £					216,580

YEAR TWO	FEE £	UNIT	DAILY	WEEKLY	ANNUAL
PEAK USAGE	40.00	HOUR	10	70	145,600
OFF PEAK	25.00	HOUR	7	49	63,700
SPONSORSHIP	20.00	DAY	3	21	21,840
TOTAL £					231,140

